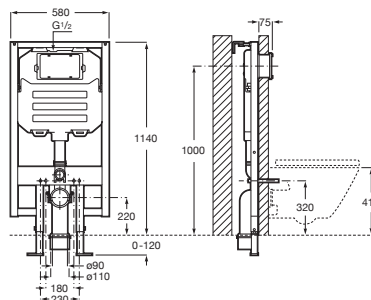


IN-WALL

DUPLO WC COMPACT with AG valve (80mm cistern) concealed cistern and frame for wall-hung WCs



TECHNICAL DRAWINGS



FEATURES

Dynamic pressure range: 0,1 - 10 Bar

Elbow connection: DN100 (110 mm), DN90 (90 mm)

Flushing type preset: Dual flush 3/6 litres

Minimum fixation depth (mm): 90

Operating panel position: Frontal

Recommended for public spaces

Space-saving

Suitable for: Wall-hung WC

Sustainable product

Tank depth (mm): 80

Water inlet position: Top



Flushing type

Flushing type: Dual flush 4.5/3 litres



Flushing type

Flushing type: Dual flush 4/2 litres



Flushing type

Flushing type: Dual flush 6/3 litres

COMPATIBLE WITH



EP2 (compact version) -
Electronic glass finished
operating plate for
concealed cistern with
automatic or touchless dual
flush and adjustable light in
multiple colour choice

890103009



EP1 (compact version) -
Electronic glass finished
operating plate for
concealed cistern with
automatic or touchless dual
flush and adjustable light in
multiple colour choice

890103008



PL5 DUAL - Dual flush
operating plate for
concealed cistern

89009900.



PL4 DUAL - Dual flush
operating plate for
concealed cistern

89009800.



PL3 PRO DUAL - Vandal-
proof stainless steel dual
flush operating plate for
concealed cistern

890097004



PL2 DUAL - Dual flush
operating plate for
concealed cistern

89009600.



PL1 DUAL - Dual flush
operating plate for
concealed cistern

89009500.



PL10 DUAL - Dual flush
operating plate for
concealed cistern with matt
finishes

89008920.



PL10 DUAL - Dual flush
operating plate for
concealed cistern

89008900.



PL7 DUAL - Dual flush
operating plate for
concealed cistern

89008830.



PL7 DUAL - Dual flush
operating plate for
concealed cistern

89008820.

In-Wall

Systems that combine efficiency and technology, turning them into solutions that look after the design and adapt perfectly to the space concerned. Innovation and the avant-garde join forces to guarantee the best features, where convenience, saving and style are to be found in every detail.



INSTALLATION AND USER MANUALS



[Installation manual](#)